

TABLE OF CONTENTS

SCENE PROTECTION

| | |
|------------------------------------|---|
| Patrol Products Dispenser Box | 2 |
| Patrol Pak Kit | 2 |
| Patrol Pak Dispenser Products | 3 |
| FLEX-CUF® Restraints | 4 |
| The TranZport Hood™ | 4 |
| The Spit Net™ | 4 |
| Scene Screen™ Crime Scene Barriers | 5 |
| Scene Screen™ QT | 5 |
| Barrier Tape Step-In Post | 5 |
| Big Easy Night Light | 5 |

NARCOTICS IDENTIFICATION

| | |
|--|-----|
| XCAT Capillary Analysis Test | 6-7 |
| DrugCheck® NxScan Onsite Flat Panel Test Cup | 8 |
| DrugCheck® SalivaScan™ Oral Fluid Drug Test | 8 |
| DrugCheck® Dip Drug Test | 9 |
| AlcoCheck® FC90 Breath Alcohol Device | 9 |
| Bath Salts Test | 10 |
| ODV™ NarcoTest® Drug Test Kits | 10 |
| NarcoTest® Professional Kit | 10 |

CRIME SCENE APPAREL

| | |
|--------------------------|----|
| Hi-Viz CSI Vest | 11 |
| Crime Scene Utility Belt | 11 |

CRIME SCENE DOCUMENTATION

| | |
|--------------------------------|----|
| Disposable Cut-Out ID Tents | 12 |
| Disposable ID Tents | 12 |
| 6" Orange Evidence Cones | 12 |
| Throwable Evidence Flags | 12 |
| 48" Evidence Marking Poles | 13 |
| Disposable Evidence Pole Cards | 13 |
| Adhesive ID Marker Kit | 13 |
| CSIpix® Comparator | 14 |
| Crime Scene Cart | 15 |
| Cargo Storage Case | 15 |
| CAD-MAT | 15 |

LATENT PRINT PROCESSING

| | |
|---|----|
| Portable CA Chamber | 16 |
| Disposable CA Chamber Kit | 16 |
| Mega-Mag Magnetic Fingerprint Powder Applicator | 17 |
| Quik-fume | 17 |
| Orange-Aid Fuming Pellets | 17 |
| Acetic Acid | 18 |
| Acetone | 18 |
| Amido Black Methanol Base | 18 |
| Amido Black Methanol Rinse | 18 |
| Amido Black Water-Based Kit | 18 |
| Ammonium Hydroxide | 18 |
| Basic Yellow 40 | 18 |
| Basic Yellow 40 Solution | 18 |
| Blood Fixative | 18 |
| Hydrochloric Acid | 18 |
| Leuco Crystal Violet Field Kit | 18 |
| Leuco Crystal Violet | 18 |
| Methanol | 18 |
| Methanol, Technical Grade | 18 |
| Ninhydrin Solution, Alcohol | 18 |
| Potassium Thiocyanate | 18 |
| Rhodamine 6G Solution | 18 |

2-5

| | |
|---|-------|
| Silver Nitrate | 18 |
| Sodium Acetate | 18 |
| Sodium Carbonate | 18 |
| Sulfosalicylic Acid | 18 |
| Sulfuric Acid | 18 |
| Lightning Powder® Latent Print Powder Pak | 19 |
| Lightning Powder® with Supranano™ Particles | 20-21 |

EVIDENCE COLLECTION

22-23

| | |
|----------------------------|----|
| Handbagz™ | 22 |
| Metal Probe Kit | 22 |
| Inkless Shoe Print Kit | 23 |
| Dura-Lar | 23 |
| Luminol Field Kit | 23 |
| Luminol Powder | 23 |
| Phenolphthalein Blood Test | 23 |
| Sulfur Devil Powder | 23 |
| Trex Case | 23 |
| Electrostatic Trex Lifts | 23 |
| Foot Trex Lifts | 23 |
| Tire Trex Lifts | 23 |

EVIDENCE PACKAGING

24

| | |
|--|----|
| Storage Boxes | 24 |
| Stand-Up Kraft Evidence Envelopes | 24 |
| Faraday Bags — Bubble Bag and Reclosable Bag | 24 |

TOOLS & INSTRUMENTS

25-27

| | |
|-----------------------------------|----|
| Wolf EcoFlex LED Bench Light | 25 |
| LED EcoTask Light | 25 |
| Workbrite Desk Lamp | 25 |
| World-Lite™ Fluorescent Desk Lamp | 25 |
| STRIX ULTRA RUSH Headlamp | 26 |
| STRIX VL Headlamp | 26 |
| STRIX IR Headlamp | 26 |
| LED High-Output Headlamp | 26 |
| CSI Pro™ Metal Detector | 27 |
| Waterproof Headphones | 27 |
| Xtend & Climb® Ladder | 27 |

SAFETY GEAR

28-29

| | |
|---|----|
| Bullet Clearing Traps | 28 |
| Bullet Catcher | 28 |
| Handgun Bullet Catcher | 28 |
| 3M™ Versaflo™ PAPR System | 29 |
| S-Series Integrated Suspension Headcovers | 29 |
| The 3M™ Peltor™ ORA TAC In-Ear Communications Headset | 29 |
| ARC Earplug with Carry Case | 29 |

MAGNIFIERS

30

| | |
|---|----|
| 5X Lighted Magnifier with Henry Disk | 30 |
| Stretch-View Series Rectangular Magnifier | 30 |
| Circline Series Magnifier | 30 |

ALTERNATE LIGHT SOURCES

31

| | |
|------------------------------------|----|
| Labino® Nova Torch | 31 |
| Labino® Astra Torch LED | 31 |
| Labino® Torch Light UVG2 Spotlight | 31 |

WAYS TO ORDER

32



Patrol Products Dispenser Box

The Products You Need Most at Your Fingertips

This new Patrol Pak Dispenser Box was designed with forensic professionals and law enforcement officers in mind. It has never been easier to access a wide variety of your most used drug test kits and other critical forensic supplies when and where you need them. Officers and technicians who need drug test kits or other frequently-used supplies can quickly grab a box and head out on the job.

The durable and attractively-finished steel storage box can be easily installed in any convenient location, from the quartermaster stores, to the patrol briefing room to the crime lab. It holds up to (50) products total — you pick and choose the selection to meet your unique needs. Top loading slots ensure you always use the oldest items first, supporting a FIFO inventory management process. Slots also make reloading the dispenser a snap.

The box fits all NIK® Public Safety and ODV™ presumptive drug test kits. It also fits a specially selected assortment of high-use patrol and forensic products including nitrile gloves, evidence markers, disposable restraints and evidence storage bags. All products are dispensed in handy cardboard boxes designed to fit a glove box or gear bag for easy access in the field. Sleek gray powder coat finish fits perfectly in any professional or institutional décor.

- Convenient storage for a variety of high-use patrol and forensic products
- Stores and dispenses up to (50) drug test kits or other forensic/patrol products
- Designed for use in large and small LE agencies, correctional facilities, and security settings
- Dispenser can be wall or counter mounted
- Durable, all-steel welded construction
- Powder coat finish is attractive and long wearing
- Design provides visual check on inventory levels
- Top-loading slots support FIFO inventory control
- Offered in gray only

DISP-BOX Patrol Products Dispenser Box

Patrol Pak Kit

Designed for first responders and patrol officers, correctional units, investigators and security forces, the new Patrol Pak Kit conveniently packages a great selection of the items listed below. Products come in a durable, high impact plastic case for easy storage and transportability. The case can be refilled with any combination of Patrol Pak products, allowing you to customize the mix to meet any future needs.

The Patrol Pak Kit includes:

- The TranZport Hood™ (4 boxes)
- Double Cuff™ Disposable Cuffs (3 boxes)
- Evidence Bags (2 boxes)
- Nitrile Gloves (2 boxes)
- Shoe Covers (2 boxes)
- First Response Markers, Orange (1 box)

PATPAK-K Patrol Pak Kit

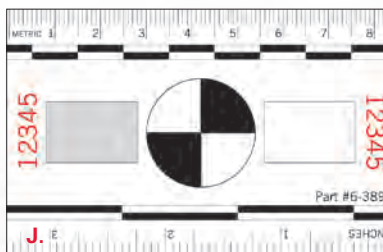
NEW PRODUCT



Patrol Pak Dispenser Products

Designed exclusively for our new Dispenser Box, this selection of forensic supplies and first responder products all fit in these new Patrol Pak boxes so you can quickly grab your most widely used products. It is the perfect choice for patrol officers, correctional units, investigators and security forces. The handy size fits in a glove box or gear bag for easy access. What you will really enjoy is the cost effective individual-use package size. At this low cost, you can easily stock up your Dispenser Box. Even if you do not have a Dispenser Box, Patrol Pak products are still the perfect choice for LE agencies. Choose from the selection of products below so you can stock up on the supplies you need!

- Great selection of forensic supplies and first responder products
- Perfect choice for patrol officers, correctional units, investigators and security forces
- Handy size fits in a glove box or gear bag for easy access
- Cost effective individual-use package size
- Store and issue products from our convenient Dispenser Box (#DISP-BOX)



A. Nitrile Gloves

3-5335 PP Large Nitrile Gloves, 10 Pair

B. Crime Scene Barrier Tape

3-5013-50 PP Crime Scene Barrier Tape, 10 yds. (9.1 m)

C. Disposable Cut-Out ID Tents

IDTC-DISTENT PP Disposable Cut-Out ID Tents, Pack of 10

D. Evidence Security Bags

3-2050 PP Evidence Security Bags, 6" x 8", Pack of 10

E. The TranZport Hood™

8320-0-2B PP The TranZport Hood, Pack of 2

F. The Spit Net™

8310-0-2B PP The Spit Net, Pack of 2

G. Double Cuff™ Disposable Cuffs

5060-W PP Double Cuff Disposable Cuffs, White, Pack of 2

H. Tyvek® Shoe Covers

3-5430 PP Tyvek Shoe Covers with Vinyl Sole, 2 Pair

I. First Response Evidence Markers

FRM-1 PP First Response Markers, Orange, Pack of 10

FRM-2 PP First Response Markers, Yellow, Pack of 10

J. CleanSearch® Card Scales

6-3892 PP CleanSearch Card Scales, Pack of 100



FLEX-CUF® Restraints

Flex-Cuf's are designed to be a quick, temporary alternative to handcuffs. Featuring a unique Strength Barb System, contained within the Flex-Cuf head, makes them virtually pick-proof. The smooth inside surface, combined with rounded edges, were designed to minimize the chance of abrasion or tissue damage. Nylon construction offers dimensional stability as well as flexibility.

- 8210-1-10** Flex-Cuf Restraints, white, Pack of 10
- 8210-1-10C** Flex-Cuf Restraints, white, 100 Packs of 10
- 8210-1-10B** Flex-Cuf Restraints, white, Case of 1000



THE HOODTM

TRANZPORT

Detainees who spit or bite are unpleasant to deal with and can be hazardous to the health of your personnel. The TranZport Hood features a bacteria-filtering medical-grade fabric which helps to contain contaminants and makes attempts at biting ineffective. A secure-lock tab and elastic neck-band allow for convenient application and prevents self-removal of the hood, without limiting the individuals range of vision.

- 8320-0-2C** The TranZport Hood, Pack of 5
- 8320-0-2B** The TranZport Hood, Pack of 100
- 8320-0-2B-500 BULK** – The TranZport Hood, Pack of 500



The SPIT NETTM

The Spit Net affixes under the arms for additional security while transporting threatening subjects. Ideal for prisoner transport, it protects against spitting and biting. The mesh netting and bacteria-filtering fabric gives the subject full visibility and breathability while helping to restrict the spread of biological contaminants.

- 8310-0-2C** The Spit Net, Pack of 5
- 8310-0-2B** The Spit Net, Pack of 100
- 8310-0-2B-500 BULK** – The Spit Net, Pack of 500



Scene Screen™ Crime Scene Barriers

Keep your crime scene safe from the prying eyes of the media and on-lookers. The Scene Screen will provide the security needed at public crime scenes. Each segment of a Scene Screen measures 40" H x 72" L (1 x 1.8 m), weighs 19 lb (8.6 kg) and is made of heavy-duty, moisture-repellent poly-cordura material with a PVC backing. The frame is made of thick PVC tubes, which are lightweight, yet sturdy enough to withstand all weather conditions. Velcro® hook-and-loop strips hold the dark material on the frame. Metal snaps are used to attach one Scene Screen segment to another. The washable material is heavy enough to use at night where bright lights illuminating the evidence will not silhouette the crime scene through the screen. The Scene Screen comes in a sturdy carrying bag. Replacement carrying bags are available.

- 3-6001** Scene Screen with Carry Bag
3-6001B Replacement Carry Bag



Barrier Tape Step-In Post

Instead of trying to find somewhere to wrap your barrier tape, now there's a solution. These temporary posts work great in undeveloped areas. Rugged foot plate and 5" (12.7 cm) galvanized steel spike for easy "step-in" installation. 48" (1.2 m) overall length.

- 3-5019** Step-In Post, Box of 10
RODBAG-LG Rod Bag, Large



Scene Screen™ QT

Produced from square stock aluminum with quick release tabs for easy set up and tear down. Each screen comes with a wheeled bag and two water bladders to prevent wind knock-over. The material is double thick nylon/polyester to reduce the see-through visibility. Each screen can be custom screen printed. One-man set up and tear down.

- 3-6005** Small Scene Screen QT, 30" H x 90" L
 (76.2 cm x 2.3 m)
3-6006 Large Scene Screen QT, 60" H x 90" L
 (1.5 x 2.3 m)



Big Easy Night Light

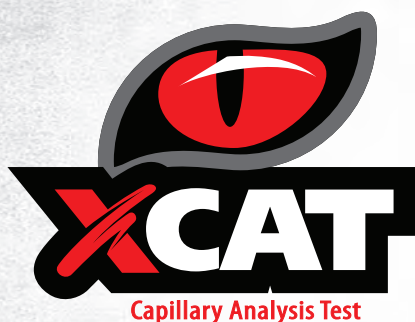
Like Having a Third Hand

The most convenient light you will ever own. Sticks to the windshield or window and puts a super bright light beam right where you need it. The light is hands-free — no more fumbling with your flashlight. Just stick it on the window and go to work. Six independently angled LED bulbs generate 1,000,000 candlepower to illuminate any size vehicle.

- Illuminate auto interiors during processing
- Strong suction cup design adheres to window
- Six angled LED bulbs generate strong light beam for hands-free processing
- Operates with three AAA batteries sold separately

- 3-5209** Big Easy Night Light

Narcotics, Explosives & GSR Detection



- Narcotics, explosives, and GSR detection in a single platform
- Red-Light/Green-Light result
- No interpretation, no color charts, no spraying, no chemical exposure
- Rugged for field use
- Detection library expandable
- Rechargeable Li-ion battery

Red X Defense
redxdefense.com

Heroin
ANFO
Gunshot Residue
Crystal Meth
PETN
Bath Salts
PCP
TNT
C4
Cocaine
Amphetamines
RDX
Methamphetamine
Picric Acid



**Detection in the palm
of your hand**
(1 step, 1 platform, 1 lb)

THE **XCAT** – APPLICATIONS & TECHNOLOGY

The **XCAT** is designed for sampling suspicious drugs and other substances on hands, vehicles, packages and surfaces. It is intended for presumptive testing.

The **XCAT** uses detection cards with specially formulated optical detection inks and software to identify characteristics unique to each individual or group of chemically related analytes.

Each analyte or group of analytes is detected with a dedicated card.

The unit uniquely identifies and analyzes each card (eg. Cocaine or GSR) and returns a red or green light signal to the user simply indicating “detection” or “no detection.”

7-1000 XCAT

7-1001 XCAT with Hard Case

SAMPLING CARDS AND CAPABILITIES*

Nitramines & Nitrates **NTR-300**

C4, RDX, PETN, Semtex, Det. Cord, Deta Sheet, Nitroglycerin, Nitrocellulose, Ammonium Nitrate, ANFO, Urea Nitrate, Black Powder

7-1010 NTR-300, Box of 10

Nitroaromatics **NTA-400**

TNT, DNT, Tetryl, Ammonium Picrate, Picric Acid, Comp B

7-1011 NTA-400, Box of 10

Amphetamines & Bath Salts **AMP-500**

Amphetamines, Methamphetamines, Crystal Meth, MDMA (Ecstasy), ‘Bath Salts’ (incl. Cathinone, Mescaline, 2C-I, Mephedrone, Pyrovalerone, Methylone, Methedrone, Butylone, TFMPP, BZP)

7-1020 AMP-500, Box of 10

Heroin **HER-110**

Heroin, Heroin hydrochloride

7-1021 HER-110, Box of 10

Cocaine & PCP **COC-210**

Cocaine (Crack), Cocaine hydrochloride, PCP

7-1022 COC-210, Box of 10

GSR **GSR-600**

Gunshot Residue

7-1030 GSR-600, Box of 10

| | |
|-------------------------------|---|
| ● Detection Principle | Optical Detection |
| ● Time to Analyze | 10-90 sec. (depending on analyte) |
| ● Calibration | None required |
| ● Power-up Time | 20 seconds |
| ● Consumables | Sampling Cards |
| ● Power Source | Rechargeable Li-ion battery (car and wall charger) |
| ● Battery Life | 7 hours (continuous use) |
| ● Operating Temperature Range | 32°F to 120°F (0°C to 49°C) |
| ● Dimensions | 3.6" x 1.7" x 6.0" (Length x Width x Height) |
| ● Weight | Under 1 lb. |



The **XCAT** sampling cards are dedicated to detecting either individual analytes or groups of related analytes.



ASSAY Tests

DrugCheck® NxScan Onsite Flat Panel Test Cup

One of the easiest to use onsite testing products on the market now comes in a flat panel cup for easy copying or scanning for a permanent record. The NxScan collection cup and testing device delivers instant, accurate results and process convenience, including a 'lay flat' design for improved record-keeping. As with other DrugCheck test cups, the NxScan self-contained urinalysis screening device detects the presence of drug metabolites in minutes, using SAMHSA cutoff levels. All NxScan drug test cups are 100% made in the USA. What distinguishes DrugCheck NxScan test cups from other on-site products is its ease of use.

DrugCheck products are ONLY sold in cases of 25. DrugCheck's patented technology requires:

- No handling or manipulation to activate testing
- No tipping or tilting cup to activate test
- No dipping reagent strips or test cards into specimen
- No dripping specimen with pipettes



| | | | | | | | |
|-------------|-----------------|----------------|----------------|-------------|--------------|----------------|---------|
| AMP AMP AMP | Amphetamine | PCP PCP PCP | Phencyclidine | MTD MTD MTD | Methadone | EDDP EDDP EDDP | EDDP |
| BUP BUP BUP | Buprenorphine | TCA TCA TCA | TCA | OXY OXY OXY | Oxycodone | KET KET KET | Ketamin |
| COC COC COC | Cocaine | BAR BAR BAR | Barbiturate | PPX PPX PPX | Propoxyphene | | |
| MET MET MET | Methamphetamine | BZD BZD BZD | Benzodiazepine | THC THC THC | Marijuana | | |
| OPI OPI OPI | Opiates | MDMA MDMA MDMA | MDMA/Ecstasy | COT COT COT | Cotinine | | |

DrugCheck products are ONLY sold in cases of 25.

| DrugCheck® NxScan Onsite Flat Panel Test Cup | | | |
|--|---------|-------------------|--|
| Legacy P/N | Part Id | Description | Drug Profile |
| 7-7100 | 1161780 | 4 panel test cup | COC, MET, OPI, THC |
| 7-7101 | 1161781 | 5 panel test cup | AMP, COC, MET, OPI, THC |
| 7-7102 | 1161782 | 6 panel test cup | AMP, BZD, COC, MET, OPI, THC |
| 7-7105 | 1161784 | 10 panel test cup | AMP, BAR, BZD, COC, MET, MTC, OPI, OXY, PCP, THC, & ph/SG/OX |
| 7-7106 | 1161785 | 12 panel test cup | AMP, BAR, BUP, BZD, COC, MDMA, MET, MTD, OPI300, OXY, PPX, THC |



DrugCheck® SalivaScan™ Oral Fluid Drug Test

The DrugCheck® SalivaScan™ Oral Fluid Drug Test is a rapid visual immuno-assay for the qualitative, presumptive detection of drugs of abuse in human oral fluid specimens and is a screening test that can be performed without the use of an instrument. The test utilizes monoclonal antibodies to selectively detect elevated levels of specific drugs in human oral fluid. The test system consists of one or two membrane strips mounted in a plastic cassette.

DrugCheck products are ONLY sold in cases of 25.

DrugCheck products are ONLY sold in cases of 25.

| DrugCheck® SalivaScan™ Oral Fluid Drug Test | | | |
|---|---------|--------------------------|--|
| Legacy P/N | Part Id | Description | Drug Profile |
| 7-7121 | 1164289 | SalivaScan OFD, 6 tests | AMP, BZD, COC, MET, MTD, THC |
| 7-7122 | 1164292 | SalivaScan OFD, 7 tests | AMP, BUP, BZD, COC, EDDP, MTD, OPI |
| 7-7123 | 1164268 | SalivaScan OFD, 8 tests | AMP, BUP, BZD, COC, MET, OPI, OXY, THC |
| 7-7124 | 1164269 | SalivaScan OFD, 9 tests | AMP, BUP, BZD, COC, EDDP, MET, OPI, OXY, THC |
| 7-7125 | 1164270 | SalivaScan OFD, 10 tests | AMP, BAR, BZD, COC, MET, MTD, OPI, OXY, PCP, THC |

DrugCheck® Dip Drug Test

Express Diagnostics offers single- and multiple-drug dip test devices, as well as single test strips. The DrugCheck Dip Drug Test is a rapid, qualitative immuno-assay for the detection of up to 14 drugs of abuse in a convenient, one-step test. Simply dip test strips in the collected urine sample for 15 seconds and read the test results at five minutes.

Like all DrugCheck cups, the dips can be customized for your group's needs. With the ability to scan results, the Dip Drug Test is ideal for use with the new DrugCheck® Online Management System™ — web-based software for more automated record-keeping. All DrugCheck Dip Drug Tests are 100% made in the USA. The DrugCheck Dip Drug Test is a rapid, qualitative immuno-assay for the detection of up to 14 drugs, at SAMHSA cutoff levels, in a convenient format. **DrugCheck products are ONLY sold in cases of 25.**

- Accurate results in 5 minutes
- Easy to read
- Simple procedure
- 18-month shelf life
- Available in single- and multiple-test panels
- No urine to pipette
- No instrumentation
- Made in U.S.A.



DrugCheck products are **ONLY** sold in cases of 25.

| DrugCheck® Dip Drug Test | | | |
|--------------------------|---------|-------------------|---|
| Legacy P/N | Part Id | Description | Drug Profile |
| 7-7110 | 1161786 | 1 panel dip test | AMP, BAR, BUP, BZD, COC, MDMA, MET, OPI300, OXY, PCP, PPX, TCA, THC |
| 7-7112 | 1161789 | 3 panel dip test | COC, OPI300, THC |
| 7-7113 | 1161790 | 4 panel dip test | AMP, COC, OPI, THC |
| 7-7114 | 1161791 | 5 panel dip test | AMP, BZD, COC, OPI, THC |
| 7-7115 | 1161792 | 6 panel dip test | AMP, BZD, COC, MDMA, OPI300, THC |
| 7-7116 | 1161793 | 8 panel dip test | AMP, BZD, COC, MET, MTD, OPI300, OXY, THC |
| 7-7117 | 1164573 | 9 panel dip test | AMP, BUP, BZD, COC, MET, MTD, OPI300, OXY, THC |
| 7-7118 | 1164619 | 10 panel dip test | AMP, BAR, BZD, COC, MDMA, MET, MTD, OPI300, OXY, THC |
| 7-7119 | 1164645 | 11 panel dip test | AMP, BAR, BUP, BZD, COC, MET, MTD, OPI300, OXY, PCP, THC |



AlcoCheck® FC90 Breath Alcohol Device

Intended to measure alcohol in the human breath, the AlcoCheck® FC90 is a handheld fuel cell sensor and, with accuracy to $\pm 0.005\%$ at 0.05% BAC, is certified and approved by the U.S. Department of Transportation (DOT) and National Highway Traffic Safety Administration (NHTSA) to conform to the model specification for alcohol screening devices. Additional features include a display range of 0.000 - 0.200% BAC, an audible alarm above 0.05% BAC, a low-battery indicator, auto power-off, blowing flow detection and will store five records.



| AlcoCheck FC90 Breath Alcohol Device | | |
|--------------------------------------|---------|------------------------------|
| Legacy P/N | Part Id | Description |
| 7-3000 | 1162618 | AlcoCheck FC90 |
| 7-3003 | 1164610 | AlcoCheck Mouth Piece, Pk100 |

Bath Salts Test

The recent proliferation and criminalization of “bath salts” as controlled substances have necessitated the creation of a new drug test kit for field testing. Forensics Source now offers law enforcement officials a simple and effective presumptive drug test to combat this problem. The bath salts tests come packaged in a single-use, three stick test kit that ensures you have all necessary tests on-hand at all times. This cost effective solution is now available in NIK® and ODV™ to complement our other colorimetric drug test kit lines.

- Stick test configuration is quick, easy and inexpensive to use
- Test kit contains all three tests needed to presumptively test for bath salts
- All tests come packaged in a convenient plastic container that stores easily and serves as a disposal case for used reagents
- Instructions included with all tests

6419 NIK® Bath Salts Test

7619 ODV™ Bath Salts Test



ODV™ NarcoTest® Drug Test Kits

Economical Individual Stick Drug Test Kits



The use of NarcoTest drug test kits by trained officers has resulted in the apprehension and prosecution of innumerable substance abusers and distributors. Identify seven of the most common drugs of abuse including cocaine, marijuana, hashish, crack, heroin and methamphetamine. Each test in this classic stick line is self-contained, pre-measured and hermetically sealed for reliable performance and accurate results. The new polystyrene tubes resist punctures from broken glass ampoules, and the color-coordinated caps provide a tight seal to prevent accidental chemical leakage during use. All stick tests are packaged in a convenient plastic box that prevents damage from sun exposure and rough handling during use and storage.

| PART # | PRESUMPTIVE TEST | DESCRIPTION OF TEST | QTY |
|-------------|----------------------------|---|----------|
| 7602 | Marquis Reagent | General test for Opiates & Amphetamines/Methamphetamine | 10 Tests |
| 7604 | Cobalt Thiocyanate Reagent | Test for Cocaine, Procaine & Tetracaine | 10 Tests |
| 7608 | Duquenois Reagent | Test for Marijuana, Hashish, Hash Oil & THC | 10 Tests |
| 7609 | KN (Fast Blue) Reagent | Test for Marijuana and seeds, Hashish, Hash Oil & THC | 10 Tests |
| 7613 | Cocaine Reagent | Test for Cocaine, Free-Base or “Crack” | 10 Tests |
| 7623 | Methamphetamine Reagent | Test for Methamphetamine & “XTC” | 10 Tests |
| 7624 | Mecke’s (Modified) Reagent | Test for all Heroin | 10 Tests |

NarcoTest® Professional Kit

Each NarcoTest Professional Kit contains 12 boxes of each of the following tests: (2) of 7602, (1) of 7604, (2) of 7608, (1) of 7609, (2) of 7613, (2) of 7623 and (2) of 7624.

The entire kit comes in a sturdy plastic kit box with a complete set of NarcoTest instructions.

NarcoTest Professional Custom Kit

Each NarcoTest Professional Custom Kit contains a total of (12) boxes of our popular stick tests in any configuration you choose from the test kits above.

7630 NarcoTest Professional Kit

7630S NarcoTest Professional Custom Kit





Hi-Viz CSI Vest

Be Seen ... Be Safe

Working crime scenes in low-visibility areas and adverse weather conditions can quickly place technicians in danger from criminals, hunters or onlookers. Wearing this bright red, high visibility vest makes it easier to identify CSIs at scenes, in crowds, underbrush, forests and other challenging settings.

The vest is designed as a plate carrier that accommodates the insertion of available ballistic plates. The carrier is easy to slip over any uniform. The highly-flexible MOLLE loops allows quick and easy customization with a wide variety of available pouches. Large hook-and-loop mounted patches on the front and back of the vest clearly identify the wearer as a crime scene technician.

Special authorization from local law enforcement officials may be required to support your purchase of ballistic plates for your Hi-Viz CSI Vest. Please contact Customer Service for more details.

- High-visibility red color promotes visibility and safety in low visibility situations
- Can be worn with or without ballistic protection
- Plate carrier accommodates 10"x12" ballistic plates (sold separately)
- MOLLE loops support incorporation of a wide variety of available pouches and ID patches
- Vest available in hi-visibility red color only
- Standard "Crime Scene" ID patches included with vest; customizable patches are available separately
- Pouches available separately in black only
- One size fits all

HIVIS-VEST-COMP Call Customer Service For Pricing
HIVIS-VEST Hi-Viz CSI Vest Only



Crime Scene Utility Belt

The Ultimate in Convenience and Comfort

This new, innovative Crime Scene Utility Belt gear belt allows technicians to conveniently carry a wide variety of equipment and supplies on their waist.

Four rows of MOLLE-compatible webbing provide innumerable options for comfortable and convenient positioning of gear. The five zippered pouches included with each belt provide lots of organized storage for essential items including powder, brushes, lights, and other tools and supplies. Internal keepers and padded design keeps belt properly positioned on the waist for optimal comfort and security. One size fits all.

- Keep all essential CSI gear at your fingertips
- MOLLE loops and (5) included pouches provide lots of storage and flexibility
- Two integrated zippered pockets provide quick access to small items
- Padded belt provides comfort, even when loaded with supplies
- Internal keepers prevent belt from riding up
- Quick release buckle allows easy adjustment for best fit
- One size fits all
- Available in black only

1160348 Crime Scene Utility Belt, Complete



Disposable Cut-Out ID Tents

Inexpensive and Versatile Evidence Marking Solution

EVI-PAQ® has taken the greatest features of its signature Disposable Evidence Markers and Cut-Out ID Tents and created a hybrid no CSI should be without — the Disposable Cut-Out ID Tent. This low cost, highly-flexible evidence marker can be used to identify a wide variety of evidence with its integrated metric scales. The reversible white and yellow faces provide multiple options when marking and photographing evidence.

Blank faces provide flexibility for creating an endless variety of number or letter sequences to mark large quantities of evidence. Tents mark easily and permanently with standard permanent markers.

- Made from heavy duty card stock
- Cut-out design simplifies measurements of shell casings and other small evidence
- Dual face markers with metric scales
- Sold in packs of (100) tents

IDTC-DISTENT Disposable Cut-Out ID Tents, Pack of 100



U.S. Patent #6,618,969

Disposable ID Tents

Developed by EVI-PAQ® to be an inexpensive, disposable and flexible way to mark evidence. Perfect for use at biologically contaminated crime scenes, simply discard the markers after use. No clean-up is necessary. Mark each ID Tent with any information pertaining to evidence. A large "P" and "L" have been printed on each side of the marker to indicate that the item has been photographed and logged prior to collection. Reference scales along the bottom edges in both metric and inches make evidence documentation simple. The sturdy cardboard construction and unique center brace ensure that each ID Tent remains standing and doesn't sag. For additional stability, the brace has a perforated hole in the center where evidence marking flags can be placed, anchoring the Disposable ID Tent to the ground. A new updated design features easy-to-fold sections right above the scale so you can convert the scale to be flat against the surface. The scale at the bottom now goes to the edge for better measurements against evidence. Also available in yellow.

IDT-DISTENT Disposable ID Tents, White, Pack of 100

IDT-DISTENTY Disposable ID Tents, Yellow, Pack of 100



6" Orange Evidence Cones

These cones provide CSIs with another great way to mark evidence for documentation and collection. 6" high-visibility orange cones have a 6" square base for exceptional stability, even in windy conditions or on rough ground. Flexible vinyl material resists breakage and is easy to clean. All cones are numbered 1-10 and 11-20 in each set. Cones come complete with a convenient nylon carrying bag for transportation and storage.

- High visibility orange cones are easy to see and photograph
- Convenient 1-20 number sequence (1-1/2" high black numbers)
- Flexible vinyl material is strong and durable
- Easy to clean contamination with bleach solution
- Cones stack to minimize storage in vehicles
- Nylon storage bag included

8-8050 Orange Evidence Cones, Set of 1-10

8-8051 Orange Evidence Cones, Set of 11-20



Throwable Evidence Flags

Marking and recovering evidence discarded during pursuits just got easier with EVI-PAQ's unique new Throwable Evidence Flags. These high visibility, weighted flags feature materials that provide exceptional throwing distance and accuracy. The flags can be tossed from vehicles or used by officers on foot to mark the location of evidence discarded by criminals. Made with high visibility yellow material with the word "EVIDENCE" in reflective silver in alternating patterns makes it easy to locate and recover the evidence at the scene, even in low light situations. The material can easily be seen by illuminating the marker with a standard or UV flashlight. The flags are sold in packs of three.

3-5050 Throwable Evidence Flags, Pack of 3

48" Evidence Marking Poles

Tallest Evidence Markers Available for Crime Scene Work

These unique pole markers are the tallest evidence markers available in the market. They are perfect for marking evidence locations in rough terrain including ditches, high grass, scrub brush, sand dunes, landfills, culverts, etc. Also ideal for use in snow drifts, creeks, retention ponds and other low-water situations. Bright colors and durable material makes them easy to clean and re-use on many crime scenes. Each pole includes a 10" white reflective tape band near the top of the pole for enhanced visibility. Packed in a convenient nylon carry bag.

- 48" pole markers offered in both safety orange and safety yellow colors
- Fluorescent tape band at top of post increases visibility in low light conditions
- Metal cap prevents damage during installation
- Lightweight and durable fiberglass poles
- Poles are easy to clean with standard cleaning products
- Packaged in durable black nylon drawstring bag for easy transportation and storage

| | |
|------------------|---|
| EP-OR-K | 48" Evidence Poles, Orange, Set of 10 |
| EP-YL-K | 48" Evidence Poles, Yellow, Set of 10 |
| EP-OR | Replacement Evidence Pole, Orange, Each |
| EP-YL | Replacement Evidence Pole, Yellow, Each |
| RODBAG-SM | Replacement Nylon Storage Bag |



Disposable Evidence Pole Cards

These new Disposable Evidence Pole Cards were designed for use with our new 48" Evidence Poles. The cards provide an easy way to mark, photograph and log specific evidence locations. The 4" x 6" cards are made from heavy cardboard stock perfect for writing on. White and yellow card faces give CSIs flexibility in identifying specific evidence types and aid in capturing photographic records of the scene. Blank cards provide flexibility for creating an endless variety of number or letter sequences. Cards mark easily and permanently with standard permanent markers.

- 4" x 6" cards are easy to see, even in difficult terrain or weather conditions
- White and yellow card faces provide multiple marking options. Pre-printed markings facilitate control on logging and photographing evidence.

EP-PC Disposable Evidence Pole Cards, Pack of 100



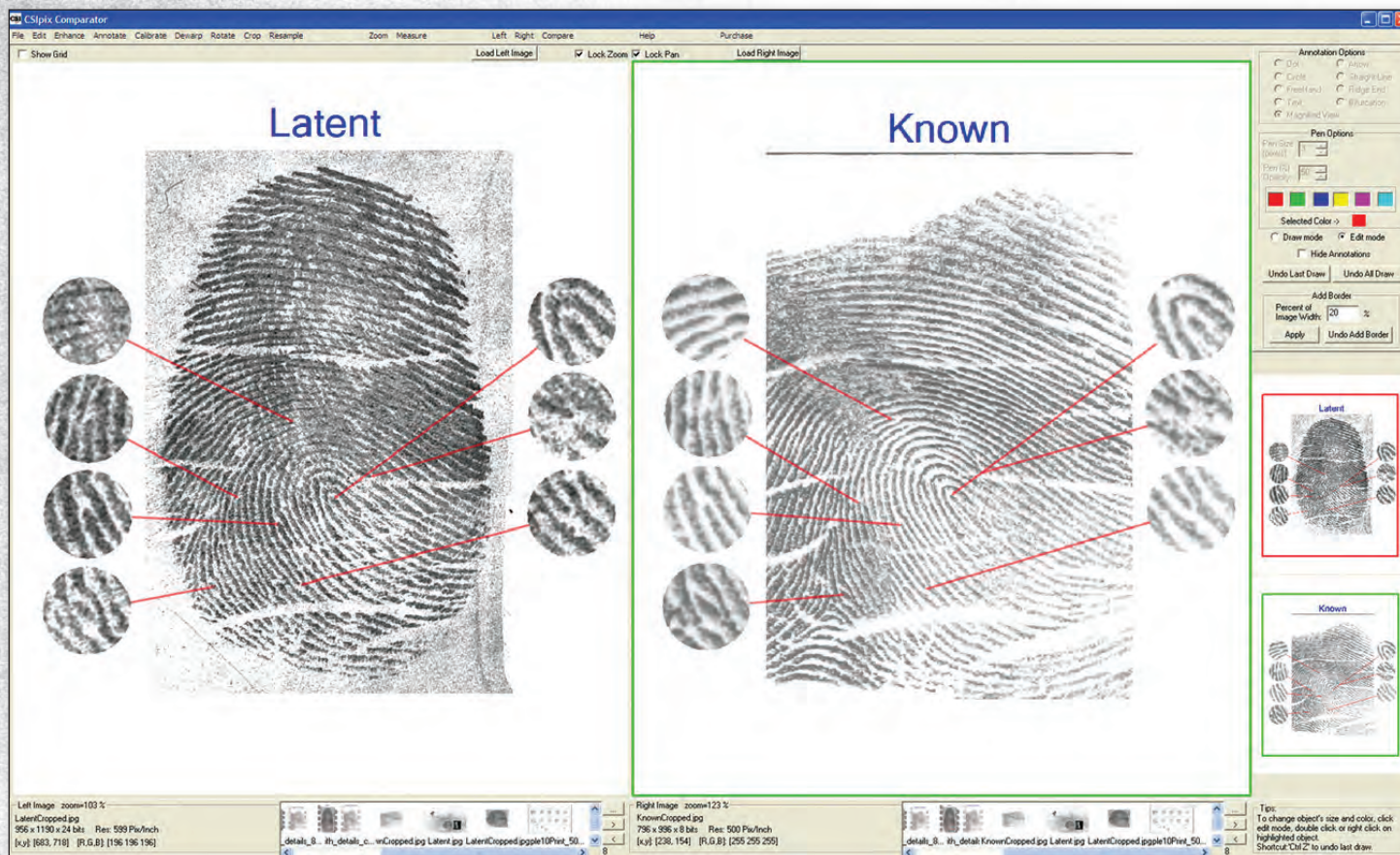
Adhesive ID Marker Kit

An essential tool for clearly identifying physical evidence at a crime scene. Each marker has a bold 20 mm scale, adding perspective and a point of reference to photographs. Each marker is 1" x 1.375" (2.5 x 3.5 cm) with a non-glare matte finish. Ideal for use with EVI-PAQ® First Response Evidence Markers. Each kit includes 50 sheets of letters or numbers, as well as several pages of arrows and blank markers.

| | |
|---------------------|--|
| AMB-COMBO | Adhesive ID Marker Kit, Combo |
| AMB-COMBO-5 | BULK – Marker Kit, Combo, Qty. 5 |
| AMB-COMBO-10 | BULK – Marker Kit, Combo, Qty. 10 |
| AMLS-CR | AMB Complete Refill |
| AMLS-HUR | AMB High Use Refill — A-E, 1-5, Blank and Arrows |

CSIpix[®] Comparator

NEW PRODUCT



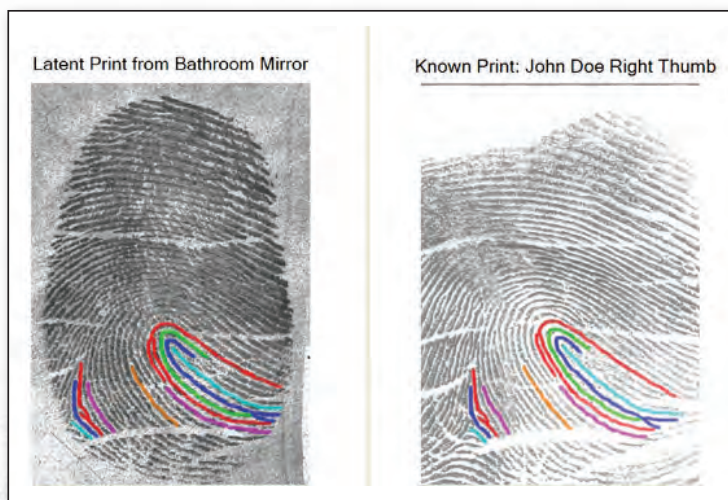
CSIpix[®] Comparator

Take Your Evidence from the Crime Scene to Courtroom Exhibits in Minutes

CSIpix Comparator software allows law enforcement personnel to process, analyze and conduct side-by-side comparison of forensic images such as fingerprints, palm prints, footprints and tire treads. Unique tools reduce the time to prepare court exhibits like magnified view "bubble" charts. CSIpix Comparator features many automated image analysis functions, making the comparison process easier and faster. These functions include auto scaling, auto levels adjustment, auto perspective dewarp, and optimized image conversion from color to gray scale. All common image file types are supported, including JPEG, BMP, TIFF, and WSO as well as NIST format files.

- Auto Scaling — calibrate an image containing a scale/ruler with one click
- Auto Levels — adjust contrast over the selected region with one click
- Lock Zoom — When two images are calibrated, just click "Lock Zoom" to display both side by side at the same magnification.
- Lock Pan — Once "Lock Zoom" is active, click "Lock Pan" to pan around both images simultaneously.
- Add Border — quickly add a white border around an image for charts and exhibits
- Annotation — Add text, arrows with headers, minutia symbols etc. then individually edit the characteristics of each annotation.
- Magnified Views — Point to a feature on a print and then simply drag a magnified "bubble" to the border — quickly produce "Bubble Charts" for presentations showing magnified views of the matching features of two prints.
- Perspective Dewarp — quickly correct perspective distortion with a few mouse clicks
- Set User Preferences — If you always use the same settings for annotations for example, you can control the default settings to your preferred values.

1-6500 CSIpix Comparator





Crime Scene Cart

Transporting and organizing your crime scene gear and equipment has never been easier! This unique folding utility cart is designed to meet the most demanding needs of the CSI community. Made from strong steel with a rugged powder coated finish for long-lasting use, this cart can carry up to 150 pounds of your most important and sensitive gear. The wide wheel and lightweight structure make it easy to operate on hard surfaces or cross country. Best of all, when you're done using it, it folds to just 10% of its original size to save storage space in your van or the trunk of your vehicle. 31.5"H x 39"L x 24"W (80 x 99 x 61 cm); 32.5 lbs (14.7 kg)

3-5265 Crime Scene Cart



Cargo Storage Case

This Action Packer Tote is the perfect way to transport and secure tools, equipment and supplies to a crime scene. It also serves as a great way to transport evidence from a scene to the lab. The high-impact plastic tote is durable, lockable, stackable, and provides on-site, weatherproof storage. The tote fits into the bed of our Crime Scene Cart (Part # 3-5265) to organize and transport all types of CSI gear.

- Plastic construction for durability
- Tough, lockable latch (lock not included)
- 35 gallon capacity holds plenty of gear, supplies and evidence for transport to and from the crime scene
- Stackable design saves valuable storage space
- Weather resistant
- Size: 35"L x 21"W x 17"H

3-5266 Cargo Storage Case



CAD-MAT

Draw A Straight Line Every Time!

Simply slide the amazing surface under any paper and create professional looking crime scene drawings. It works perfectly with any clipboard or paper and is very easy to use; just slide it under your paper and draw like a pro. The proprietary surface geometry compels the point of your ballpoint pen, roller ball pen or mechanical pencil to travel in a straight line.

- Perfect for crime scene sketching
- Works with any standard pencil or pen
- CAD-MAT Drawing Sheet size: 8.5" x 12.125"
(fits under standard 8.5" x 11" paper)
- Made in the USA

4-0150 CAD-MAT





Portable CA Chamber

Big Features in a Small Package

Forensics Source completely redesigned this important piece of equipment. The roomy 15" W x 11"H x 8"D chamber fits a wide variety of commonly processed evidence including cans, bottles and weapons. A special port incorporated in the design allows insertion of the Fume-A-Wand or the attachment of an exhaust tube to vent fumes. This small but capable chamber is as much at home in the lab as it is in the field.

- Made from durable ABS plastic
- Includes (2) hanging bars with (4) clips for suspending evidence
- Magnetic latch simplifies chamber loading and unloading
- Convenient metal carrying handle allows for easy transportation and storage at the crime scene or the lab
- 15" W x 11"H x 8"D (38.1 x 27.9 x 20.3 cm)
- Weighs only 4 lbs.

1-4676 Portable CA Chamber



Disposable CA Chamber Kit

Our new Disposable CA Chamber Kit is designed for fast set-up and low cost of operation. Insert the flexible rods included with the chamber into the marine board base to quickly form a 12.5" X 21" (31.8 x 53.3 cm) dome that supports the disposable fuming bags. The Disposable CA Chamber Kit includes (25) disposable fuming bags, (5) clips for hanging evidence and (25) aluminum fuming dishes. Kit comes packaged in a convenient reusable carry bag for easy transportation and storage.

- Low cost, effective CA fuming chamber
- Eliminates messy clean-up — just dispose of used fuming bags
- Kit includes (25) fuming bags, (5) evidence hanging clips and (25) aluminum CA fuming dishes
- Carry bag included

1-4680 Disposable CA Chamber

1-4681 Replacement Bags, Pack of 25

Mega-Mag Magnetic Fingerprint Powder Applicator

This magnetic fingerprint powder applicator is designed for use with magnetic powder. The powder will form a cluster at the end of the applicator, and then the applicator can be used as a brush to develop the latent print. Simply place the unused portion back in the jar when you are done dusting for prints. The Mega-Mag Magnetic Fingerprint applicator is easy to use, and is not as messy as standard fingerprint powder. For use on non-metallic surfaces.

1-0152 Mega-Mag Magnetic Fingerprint Powder Applicator



NEW PRODUCT

Quik-fume

Developed from the US military's heat and eat ration concept, now you can have super-glue fuming in one convenient, disposable container, without the sticky mess, with Quik-fume! Developed prints are whiter and appear much faster due to the activator and the concentrated print developer. Produces a tank full of fumes in less than four minutes.

1-4506 Quik-fume, Pack of 10



NEW PRODUCT

Orange-Aid Fuming Pellets

Orange-Aid is a new product that represents a substantial improvement over traditional CN fuming methods for latent print development. A one-step method for producing color fingerprints on a variety of surfaces, including hard to process surfaces like CD's and water bottles, Orange-Aid works wherever cyanoacrylate fuming is used. But, unlike traditional fuming, prints developed with Orange-Aid are immediately UV enhanced and visible, with no additional dye staining or coloring steps required. Easier processing means more prints are likely to be found, and ultimately, more closed cases.

1-6064 Orange-Aid Fuming Pellets



Pioneer Forensics LLC

Veritatem per Evidentia
"Truth through Evidence"



Forensics Source is proud to partner with Pioneer Forensics LLC in bringing this comprehensive line of specialty chemicals to the market. Pioneer Forensics is an investigative, research and training company with extensive experience in the development of innovative processing solutions for latent print professionals.



Latent Print Processing Reagents and Chemicals

| DESCRIPTION | PART # | PART ID | SIZE |
|--|--------|---------|---------|
| Acetic Acid, 16 oz. | 1-2830 | 1162938 | 16 oz. |
| Acetic Acid, 128 oz. | 1-2831 | 1162941 | 128 oz. |
| Acetone, 128 oz. | 1-2832 | 1162942 | 128 oz. |
| Amido Black Methanol Base, 16 oz. | 1-2833 | 1163029 | 16 oz. |
| Amido Black Methanol Base, 32 oz. | 1-2834 | 1163031 | 32 oz. |
| Amido Black Methanol Rinse, 16 oz. | 1-2835 | 1163033 | 16 oz. |
| Amido Black Methanol Rinse, 32 oz. | 1-2836 | 1163034 | 32 oz. |
| Amido Black Water-Based Kit, 16 oz. | 1-2837 | 1163035 | 16 oz. |
| Amido Black Water-Based Kit, 32 oz. | 1-2838 | 1163036 | 32 oz. |
| Ammonium Hydroxide, 16 oz. | 1-2840 | 1163037 | 16 oz. |
| Ammonium Hydroxide, 128 oz. | 1-2841 | 1163038 | 128 oz. |
| Basic Yellow 40, 300%, 25 G | 1-2842 | 1163077 | 25g |
| Basic Yellow 40, 680%, 25 G | 1-2843 | 1163078 | 25g |
| Basic Yellow 40 Solution, 300%, 1 L | 1-2844 | 1163079 | 1l |
| Basic Yellow 40 Solution, 680%, 1 L | 1-2845 | 1163080 | 1l |
| Blood Fixative, 16 oz. | 1-2846 | 1163081 | 16 oz. |
| Blood Fixative, 32 oz. | 1-2847 | 1163082 | 32 oz. |
| Hydrochloric Acid, 16 oz. | 1-2850 | 1163083 | 16 oz. |
| Hydrochloric Acid, 128 oz. | 1-2851 | 1163084 | 128 oz. |
| Leuco Crystal Violet Field Kit, 8 oz. | 1-2852 | 1163122 | 8 oz. |
| Leuco Crystal Violet Field Kit, 16 oz. | 1-2853 | 1163123 | 16 oz. |

| DESCRIPTION | PART # | PART ID | SIZE |
|--|--------|---------|---------|
| Leuco Crystal Violet Field Kit, 32 oz. | 1-2854 | 1163129 | 32 oz. |
| Leuco Crystal Violet, 25 G | 1-2855 | 1163131 | 25g |
| Methanol, 16 oz. | 1-2861 | 1163126 | 16 oz. |
| Methanol, 128 oz. | 1-2862 | 1163125 | 128 oz. |
| Methanol, Technical Grade, 128 oz. | 1-2863 | 1163154 | 128 oz. |
| Ninhydrin Solution, Alcohol, 8 oz. | 1-2865 | 1163155 | 8 oz. |
| Ninhydrin Solution, Alcohol, 16 oz. | 1-2866 | 1163156 | 16 oz. |
| Potassium Thiocyanate, 100 G | 1-2871 | 1163161 | 100g |
| Potassium Thiocyanate, 500 G | 1-2872 | 1163162 | 500g |
| Rhodamine 6G Solution, 1 L | 1-2874 | 1163163 | 1l |
| Silver Nitrate, 25 G | 1-2875 | 1163164 | 25g |
| Silver Nitrate, 125 G | 1-2876 | 1163165 | 125g |
| Sodium Acetate, 100 G | 1-2877 | 1163166 | 100g |
| Sodium Acetate, 500 G | 1-2878 | 1163167 | 500g |
| Sodium Carbonate, 100 G | 4-7855 | 1163168 | 100g |
| Sodium Carbonate, 500 G | 4-7856 | 1163169 | 500g |
| Sulfosalicylic Acid, 100 G | 1-2883 | 1163170 | 100g |
| Sulfosalicylic Acid, 500 G | 1-2884 | 1163171 | 500g |
| Sulfuric Acid, 16 oz. | 1-2887 | 1163189 | 16 oz. |
| Sulfuric Acid, 128 oz. | 1-2888 | 1163195 | 128 oz. |



Lightning Powder® Latent Print Powder Pak

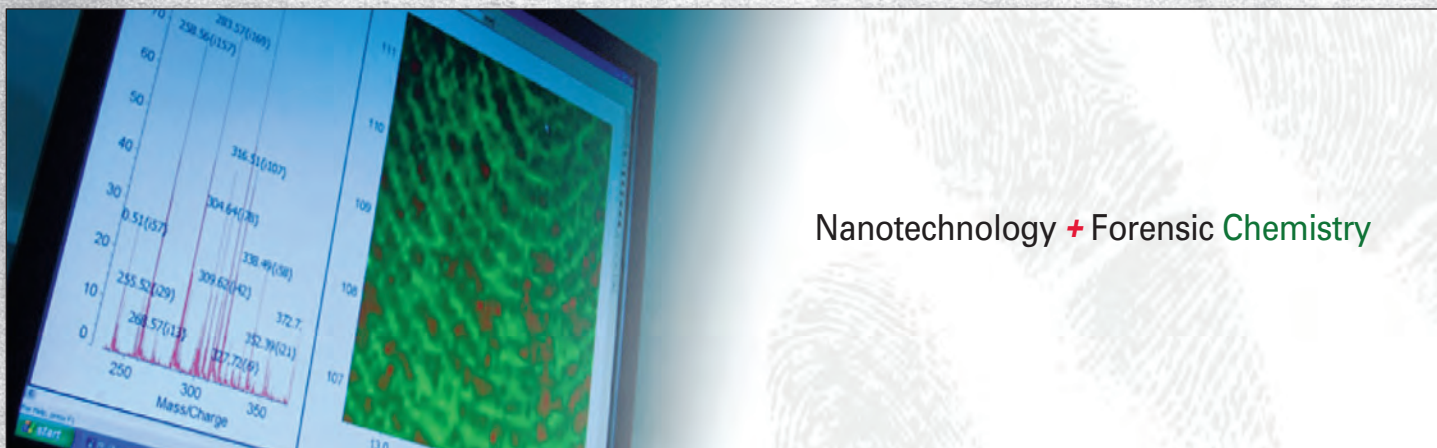
Convenient, Cost-Effective Latent Print Powder Refills

Latent Print Powder Paks from Lightning Powder are the most cost-effective refills available on the market. These 2 oz. pre-measured refills simplify decanting into standard powder jars. The durable pouch is easy to store and transport. The Powder Pak's moisture-proof seal ensures the powder stays dry and clean, ready for immediate use in the field or in the lab.

- Most cost-effective way to refill powder jars
- Simplifies decanting of powder into existing jars
- Pre-measured 2 oz. package fits standard jars
- Easy to store and transport
- Durable pouch prevents breakage
- Gusseted bottom allows pouch to stand upright for ease of use
- Sealed against weather and leakage
- Press-to-close zip seal for easy use/re-use
- Viewing window clearly shows powder color for quick reference

All bulk items come in packs of 25

| PART # | DESCRIPTION | COLOR |
|------------|---------------------------------------|------------------------|
| 1-0001R | Latent Print Powder Pak | Black |
| 1-0001R-25 | BULK — Latent Print Powder Pak | Black |
| 1-0081R | Latent Print Powder Pak | White |
| 1-0081R-25 | BULK — Latent Print Powder Pak | White |
| 1-0003R | Latent Print Powder Pak | Silver/Gray |
| 1-0003R-25 | BULK — Latent Print Powder Pak | Silver/Gray |
| 1-0005R | Latent Print Powder Pak | Bi-Chromatic™ |
| 1-0005R-25 | BULK — Latent Print Powder Pak | Bi-Chromatic™ |
| 1-0160R | Latent Print Powder Pak | Black Magnetic |
| 1-0160R-25 | BULK — Latent Print Powder Pak | Black Magnetic |
| 1-0161R | Latent Print Powder Pak | White Magnetic |
| 1-0161R-25 | BULK — Latent Print Powder Pak | White Magnetic |
| 1-0164R | Latent Print Powder Pak | Silver/Gray Magnetic |
| 1-0164R-25 | BULK — Latent Print Powder Pak | Silver/Gray Magnetic |
| 1-0165R | Latent Print Powder Pak | Bi-Chromatic™ Magnetic |
| 1-0165R-25 | BULK — Latent Print Powder Pak | Bi-Chromatic™ Magnetic |
| 1-0050R | Latent Print Powder Pak | Redwop™ |
| 1-0050R-25 | BULK — Latent Print Powder Pak | Redwop™ |
| 1-0052R | Latent Print Powder Pak | Greenwop™ |
| 1-0052R-25 | BULK — Latent Print Powder Pak | Greenwop™ |
| 1-0052R-25 | BULK — Latent Print Powder Pak | Greenwop™ |



Lightning Powder® with Supranano™ Particles

Forensics Source is proud to partner with ARRO Forensics in bringing the most exciting and innovative new technology in latent print processing and investigative process to the forensics market: nano-engineered powders and suspensions. ARRO is the world leader in the research, development and manufacture of nanotechnology-derived particles and services for law enforcement applications. Combining SALDI-TOF-MS-MS Analysis with nano particle enhanced Lightning Powder® generates significant investigative benefits in latent print interrogation including:

- Identification of contact residues including drugs and explosives
- Identification of metabolites including nicotine, therapeutic and illicit drugs
- Identification of biomarkers for demographic criteria including age, gender and ethnicity

Working with a MALDI Spectrometer, which quickly detects physically contacted materials and those consumed and metabolized which pass through the skin's pores, it will be possible to use latent print analysis to eliminate suspects — saving time and money for police forensic units. These capabilities will be instrumental in addressing the investigative needs of crime scene units, homeland security and counter-terrorism agencies.

Powders

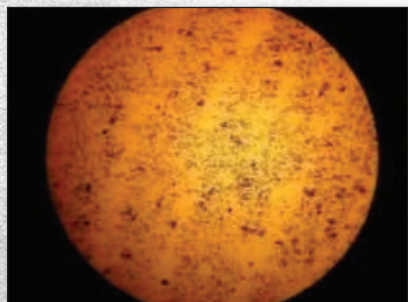
Lightning Powder with Supranano™ Particles are specially formulated to develop latent marks on both non-porous (e.g. glass, ceramics) and semi-porous surfaces (e.g. plastics, nonferrous metals). These nano-particle enhanced powders provide 30% enhanced performance over existing powders.

- Smaller particle size powder develops latent marks with higher definition and clarity
- Prints can be developed up to twenty-eight days after deposition
- Designed not to clump — excess powder is easily removed from the brush
- Safe to use without additional HSE requirements
- Available in various colors and configurations for use on different surfaces

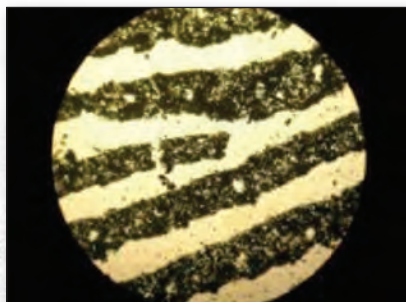
Suspensions

Lightning Powder Suspensions with Supranano™ Particles are specially formulated to develop latent prints and footwear marks on non-porous (glass, ceramics) and semi-porous surfaces (plastics, nonferrous metals). Suspensions are a viable alternative to CNA development. They can be used after CNA development to stain fumed latent prints and also process prints not developed by the cyanoacrylate process. Suspensions also make it possible to develop latent prints contaminated by water.

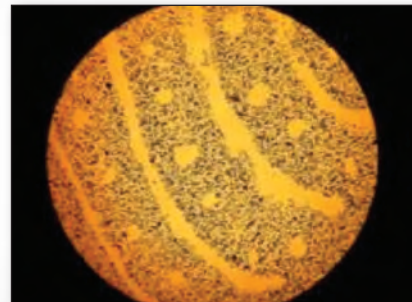
- Smaller particle size than other suspensions delivers improved print definition
- Able to develop latent prints and footwear marks on a wide range of surfaces
- Quick and effective application by pouring, dipping or spraying the item
- No special equipment or HSE needed
- Available in a variety of colors and fluorescents for use on different surfaces



COMMERCIAL POWDER



NANO POWDER



NANO SUSPENSION



Lightning Powder® with Supranano™ Particles

| PART # | DESCRIPTION |
|--------|--|
| 1-0501 | Black, 60 ml |
| 1-0504 | White, 60 ml |
| 1-0521 | Magnetic, Black, 30 ml |
| 1-0542 | Fluorescent, Red, 60 ml |
| 1-0546 | Fluorescent, Yellow, 60 ml |
| 1-0550 | Fluorescent, Green, 60 ml |
| 1-0561 | Fluorescent Magnetic, Red, 30 ml |
| 1-0564 | Fluorescent Magnetic, Yellow, 30 ml |
| 1-0567 | Fluorescent Magnetic, Green, 30 ml |
| 1-0580 | Fluorescent Suspension, Red, 250 ml |
| 1-0581 | Fluorescent Suspension, Yellow, 250 ml |
| 1-0582 | Fluorescent Suspension, Green, 250 ml |

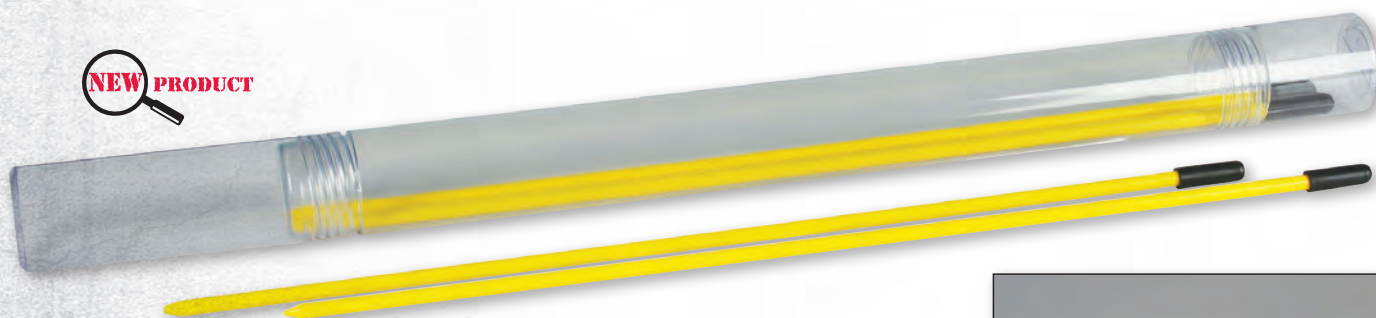
ARRO SUPRANANO



Handbagz™

Handbagz are constructed from bio-medical absorbent materials. The bags have a plastic film outer barrier to prevent the absorption of outside liquids and the leaking of liquids from the inside. Each bag has a stretch wrap to make securing the bag to the arm a one-man operation. The outside of the bag can be marked with a permanent marker to designate hand, evidence and case information. Bags measure: 7.5" x 13" (19.1 x 33 cm) with a 13" (33 cm) stretchable fabric securing strap.

3-5470 Handbagz, Pair
3-5470-50 BULK — Handbagz, 50 Pair

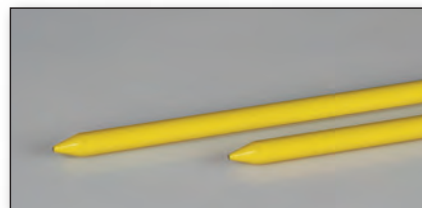


Metal Probe Kit

These durable steel probes with integrated tapered points will quickly become the most used tools in your arsenal. They provide an infinite amount of versatility. Use them as location markers, autopsy probes, trajectory rods, or in any other situation where only a long, straight, pointed rod will do.

- Kit contains (5) steel probes in a convenient carrying tube
- Rubber grips make probes easy to use, especially in delicate situations or adverse weather conditions
- Yellow powder-coated probes are easy to see and simple to clean
- 18" X .25" diameter (45.7 x .64 cm)

PRB-K Metal Probe Kit





Pioneer Forensics LLC
Veritatem per Evidentia
"Truth through Evidence"



Evidence Collection

| DESCRIPTION | LEGACY P/N | PART ID | SIZE |
|------------------------------------|------------|---------|------------|
| Dura-Lar, 12.5" X 100' | 4-5056 | 1163202 | 12.5X100 |
| Dura-Lar, 16.5" X 100' | 4-5057 | 1163203 | 16.5X100 |
| Electrostatic Trex Lifts, 50' Roll | 4-5050 | 1163196 | 10X50 Roll |
| Foot Trex Lifts, 12 Sheets | 4-5051 | 1163197 | 12 Sheets |
| Foot Trex Lifts, 25 Sheets | 4-5052 | 1163198 | 25 Sheets |
| Luminol Field Kit, 8 oz. | 4-7850 | 1163128 | 8 oz. |
| Luminol Field Kit, 16 oz. | 4-7851 | 1163133 | 16 oz. |
| Luminol Field Kit, 32 oz. | 4-7852 | 1163127 | 32 oz. |
| Luminol Field Kit, 4 oz. Packs | 4-7853 | 1163124 | 6 Packs |
| Phenolphthalein Blood Test, 15 ml | 4-7825 | 1163157 | 15 ml |
| Phenolphthalein Blood Test, 500 ml | 4-7826 | 1163160 | 500 ml |
| Sulfur Devil Powder, 25 lb | 1-2885 | 1163184 | 25 lb |
| Sulfur Devil Powder, 50 lb | 1-2886 | 1163185 | 50 lb |
| Tire Trex Lifts, 10 Sheets | 4-5053 | 1163199 | 10 Sheets |
| Trex Case, 25 Pack | 4-5054 | 1163200 | 25 Pack |
| Trex Case, 50 Pack | 4-5055 | 1163201 | 50 Pack |

Forensics Source is proud to partner with Pioneer Forensics LLC in bringing these exciting specialty chemicals and impression evidence products to the market. Pioneer Forensics is an investigative, research and training company with extensive experience in the development of innovative evidence processing solutions for forensics professionals.

Inkless Shoe Print Kit

Identicator®'s legendary LE 25 Inkless Shoe Print Kit has been completely redesigned to aid and simplify the taking of shoe or footprints anywhere from the crime scene to the crime lab. The kit comes with (100) chemically-sensitive impression sheets per pack. The included inkless coater produces up to (200) impressions per kit. Replacement impression sheet pads and coaters can be purchased separately to easily and cost-effectively replenish the kit. Conveniently combines inkless coater and impression sheet pads in a single folio.

- Utilizes Identicator's proprietary inkless chemistry for permanent, high-contrast black prints
- No more lost or damaged impression sheets
- Each kit contains one coater and one pad of (100) impression sheets
- Coater and impression sheet pads refills available separately

LE 25 Inkless Shoe Print Kit
LE 25 P Impression Sheets, Pack of 100
LE 25 C Inkless Coater





Storage Boxes

The EVI-PAQ® line of evidence boxes just got better with the addition of these new boxes sized specifically to address the collection and transport of a wide variety of smaller evidence including cans, bottles, cell phones and other electronic devices. Made from the same corrugated material as our larger boxes, these durable and versatile boxes ensure all your critical evidence items are protected from loss or damage between the crime scene and the crime lab.

The window box versions are constructed of polystyrene, a durable material which provides an unobstructed view of all contents without additional evidence handling or compromising of tamper-proof seals.

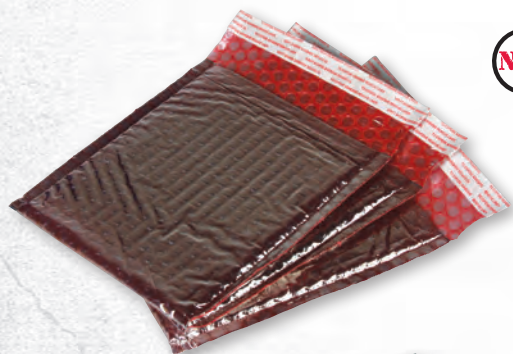
- CN-BOX** Soda Can/Cell Phone Storage Boxes, Bundle of 25
- BOT-BOX** Bottle/Tall Can Storage Boxes, Bundle of 25
- WCN-BOX** Soda Can/Cell Phone Storage Boxes with window, Bundle of 25
- BWOT-BOX** Bottle/Tall Can Storage Boxes with window, Bundle of 25

Stand-Up Kraft Evidence Envelopes

These convenient natural kraft envelopes incorporate a Linear Low Density Polyethylene (LLDPE) plastic liner to protect both the evidence and envelope from moisture damage. The envelopes can be used to collect and store a wide variety of evidence including cans, bottles, cigarette butts, coins, and electronic devices. The gusseted bottom allows the envelope to stand up for convenient loading and features a zippered closure.

The window envelope versions provide excellent visual access to the contents without violating the seal integrity and can be easily marked with a permanent marker for logging purposes.

- 3-0060** 5" x 8" (12.7 x 20.3 cm) Evidence Envelopes, Pack of 100
- 3-0061** 6" x 9" (15.2 x 22.9 cm) Evidence Envelopes, Pack of 100
- 3-0062** 6.5" x 11.5" (6.3 x 29.2 cm) Evidence Envelopes, Pack of 100
- 3-0065** 5" x 8" (12.7 x 20.3 cm) Evidence Envelopes with window, Pack of 100
- 3-0066** 6" x 9" (15.2 x 22.9 cm) Evidence Envelopes with window, Pack of 100
- 3-0067** 6.5" x 11.5" (6.3 x 29.2 cm) Evidence Envelopes with window, Pack of 100



Faraday Bags Static Shielding Bubble Bag

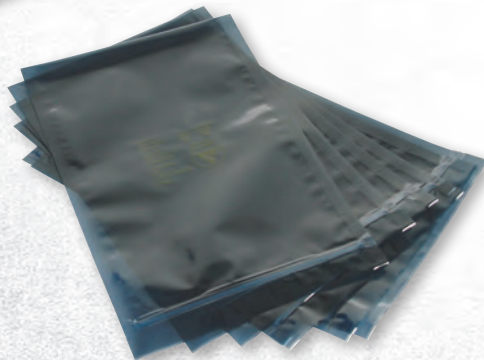
Complete protection from static discharge and rough handling, five aluminum "Faraday cage" layers shield products from electrostatic fields inside and outside the bag. 3/16" anti-static bubble absorbs shock, dampens vibrations and provides ESD protection. Measuring 6" x 8" (15.2 x 20.3 cm), the shielding bubble bag meets the requirements of MIL-PRF-81705D and EIA-541.

- 3-0070** Static Shielding Bubble Bag, Pack of 25, 6" x 8" (15.2 x 20.3 cm)
- 3-0071** 9" x 12" (22.9 x 30.5 cm), Pack of 10
- 3-0072** 18" x 22" (45.7 x 55.9 cm), Pack of 5

Static Shielding Reclosable Bag

Secure static-sensitive items quickly with double-track zipper closure. Ideal for intercompany transfers, metal "Faraday cage" layer shields products from electric energy inside and prevents static build-up. With a 3.1 mil transparent metallic film, the 4-layer protection guards against charges inside and out. Measuring 4" x 8" (10.2 x 20.3 cm), the shielding reclosable bag meets the requirements of MIL-STD-3010 4046, EIA 541, EIA 625 and ANSI/ESD S20.20.

- 3-0080** Static Shielding Reclosable Bag, Pack of 25, 4" x 8" (10.2 x 20.3 cm)
- 3-0081** 6" x 10" (15.2 x 25.4 cm), Pack of 25
- 3-0082** 9" x 12" (22.9 x 30.5 cm), Pack of 25
- 3-0083** 12" x 16" (30.5 x 40.6 cm), Pack of 25
- 3-0084** 18" x 22" (45.7 x 55.9 cm), Pack of 25



NEW PRODUCT



Wolf EcoFlex LED Bench Light

Designed in consultation with renowned bench artisan Kate Wolf, the innovative new Wolf EcoFlex LED Bench Light by Dazor® is an affordable, rugged, environmentally friendly LED bench light. The sleek head rotates 340 degrees vertically and 90 degrees horizontally, and features 4x1-Watt dimmable high brightness white LEDs optically mixed to produce an even light pattern. The 25" flexible arm allows you to aim the light exactly where you need it, without the heat! The light features a grooved aluminum head design that removes heat and is comfortable to the touch. Dazor's clever thermal engineering allows the LEDs to achieve their rated life of 50,000 hours.

SPECK-LEDFA25CM Wolf EcoFlex LED Bench Light

NEW PRODUCT



LED EcoTask Light

The LED EcoTask Light by Dazor® combines today's most advanced solid state LEDs with expertise in optical, electrical and thermal design. The result is an evenly diffused illumination pattern that is color consistent and able to cover a broad work area similar to fluorescent bulbs. The EcoTask Light is dimmable down to 30 percent of full light output with no color deterioration. And, it offers 60,000 plus hours of operating life. With an all metal construction and universal clamp mount, the light comes with a five-year warranty.

LED1322CM-BK LED EcoTask Light

NEW PRODUCT



Workbrite Desk Lamp

Dazor's new Workbrite features a "contemporary floating arm" that combines its time-tested and patented counterbalanced spring technology with a fully enclosed and durable powder coated steel casing. The arm can easily be raised, lowered, or universally positioned with the touch of a finger, to reposition the light exactly where needed without being distracted from the work at hand. Precision control of the light source allows a personal and immediate means of eliminating glare, controlling shadows, and regulating direction and brightness of the lighting. Once positioned, the Workbrite's light source holds its place without drifting. Smooth regal design lines and the lack of exposed springs or wires give the new arm a clean, clutter free and stylish look. This design comes with a 33" arm fixture reach, takes a 45W Fluorescent (3x 15W) bulb, Daylight, 27" Arm, Desk Base, Black

318M3-BK Workbrite Desk Lamp

NEW PRODUCT



World-Lite™ Fluorescent Desk Lamp

This affordable World-Lite desk lamp features a color accurate 13-watt full spectrum compact fluorescent bulb that uses up to 75% less energy than a regular incandescent bulb while lasting up to 10 times longer. The bulb is surrounded on three sides by a mirror reflector that maximizes light output to cover a wide area without annoying glare. The double jointed friction arm provides a generous 28" extension reach that holds it position.

2703-BK World-Lite Fluorescent Desk Lamp

NEW PRODUCT

NEW PRODUCT



STRIX ULTRA RUSH Headlamp

Both durable and extremely powerful at 760 lumens, the ULTRA RUSH rechargeable headlamp is the lighting solution designed for intense, demanding activities. It is ideal for fast-paced activities where lighting is crucial. The mixed beam with four lighting levels allows the user to choose between power and battery life according to his needs. The compact ACCU 2 ULTRA rechargeable battery offers the perfect balance between capacity and compactness, making it comfortable on the head. Ergonomics and construction make the ULTRA RUSH headlamp particularly intuitive and reliable in any situation.

9-6005 STRIX ULTRA RUSH Headlamp

STRIX VL Headlamp

The STRIX VL line of headlamps was specifically created to respond to the requirements of the military during operations where stealth is a key factor. For each of the numerous ways the headlamp can be worn, the double rotation system allows greater freedom for orienting the beam. The STRIX VL headlamp has color lighting (red, green, and blue) and three white lighting levels. It offers exceptional versatility and intuitive use with absolute reliability guaranteed.

9-6002 STRIX VL Headlamp, Black

NEW PRODUCT



STRIX IR Headlamp

With the same features, versatility and durability of the STRIX VL, the IR model comes with color lighting (red, green, and blue), three white lighting levels, as well as three infrared lighting levels. The IR lighting has three modes: close-range vision, movement mode, and IFF mode (Identification Friend or Foe).

9-6004 STRIX IR Headlamp, Black

LED High-Output Headlamp

The headlamp comes in colors for specific outdoor activities. Its functionality, as well as its Wide Angle lenses (red, green, blue and transparent), make it perfect for the demanding user. The sliding Wide Angle lens allows the user to switch from a focused beam to a wide beam with one quick movement. This headlamp has three lighting levels for any situation and a flashing mode for signaling the user's presence.

- Discreet proximity lighting preserving night vision:
 - colored (red, green, blue) and transparent Wide Angle lenses included
 - interchangeable lenses
 - carrier for second lens located on headband
- A single light source that addresses multiple lighting needs:
 - three lighting levels (maximum, optimum, economic)
 - two lighting modes (continuous and flashing)
 - flood beam for sharp proximity lighting (Wide Angle lens)
 - spot beam shines up to 35 meters
 - Boost mode: shines 50 meters for up to 20 seconds
- Compact and lightweight:
 - single compartment contains LED and batteries
 - weighs less than 100 g including batteries
- Battery charge indicator light:
 - warns when the batteries are 70% and 90% discharged

9-6001 LED High-Output Headlamp



CSI Pro™ Metal Detector

The CSI Pro is the workhorse of ground search metal detectors. Completely rugged, the CSI Pro is weatherproof against all environments and waterproof up to 10 feet. Using adjustable levels of its Iron Audio, this detector can discriminate between trash and good targets, and uses proportional audio and Tone Roll Audio features to allow the user to hear subtle changes in a target's response to better judge conductivity, size, shape, and depth. In addition, the CSI Pro uses digital target identification, has a fast recovery speed allowing it to quickly identify multiple targets in close proximity, and uses 15 KHz frequency to detect small targets. The CSI Pro includes Garrett Deluxe Headphones, a tactical travel/storage case, the CSI Pro-Pointer™ pinpointing metal detector, a training DVD and operator's manual.

8-8010 CSI Pro™ Metal Detector

8-8011 Waterproof Headphones

Xtend & Climb® Ladder

The ergonomic design of this ladder allows for smooth operation while the red/green locking tab indicators show when the rung is locked in place and safe. Made of Aerospace Engineered 6061 alloy, the Xtend & Climb® Professional Edition can withstand even the most demanding jobs.

Features:

- Integrated Carry Handle
- No-Pinch Closure System™
- ANSI Rated Type IA Ladder 300lbs (780p) Type I 250lbs (785p) Duty Rating
- Non-Slip End Caps
- Angled Thumb Release to Insure Proper Hand Position
- Aerospace Engineered-Using 6061 Alloy
- Clean-Touch Anodized Finish
- Carry Bag Included

Dimensions:

Height Open: 12.5' (3.8 m)

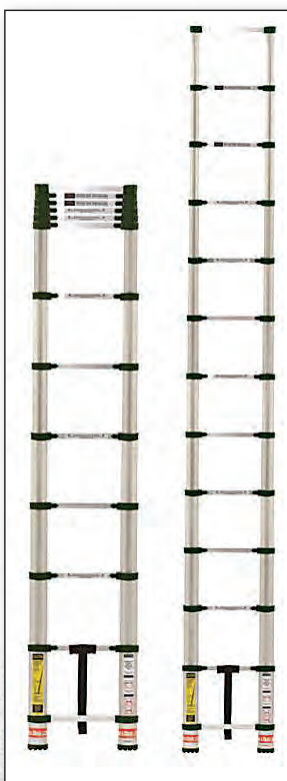
Height Closed: 32.25" (81.9 cm)

Width: 19.75" (50.2 cm)

Depth: 3.75" (9.5 cm)

Weight: 32 lbs (14.5 kg)

3-5180 Xtend & Climb Ladder





Bullet Clearing Traps

Dry firing a gun is often necessary to check its status and insure all rounds have been removed. Our double walled Clearing Trap makes this a safe and simple process. The trap may be used to check handguns and rifles (up to .223 & .308), with complete confidence that the trap's armored steel chamber filled with composite rubber will safely contain any unexpected shots fired. The Action Target Clearing Trap is perfect for shooting ranges, locker rooms, armories, gunsmiths, and correctional facilities.

Other clearing traps are available on the market, but at prices much higher than they need to be. The Action Target Clearing Trap costs less, but the lower price does not reflect the trap's quality because it is made of the finest steel and it is designed to meet our strictest standards. Rather, it reflects on Action Target's desire to provide a valuable service and give something back to the law enforcement community.

- 4-2020** Stand Alone Bullet Trap
- 4-2021** Table-Top Bullet Trap

Stand Alone Clearing Trap

Size: 32" H x 26" L x 10" W
Weight: 105 lbs.
Handgun: Yes
Rifle: Yes (up to .223 and .308)



Table-Top Clearing Trap

Size: 12" H x 18" L x 7" W
Weight: 35 lbs.
Handgun: Yes
Rifle: No



Bullet Catcher

The Bullet Catcher was designed as a replacement for expensive water tanks used for ballistic examinations. The chamber of the Bullet Catcher is filled with ballistic fibers. Unlike cotton, which is commonly used in bullet retrieval chambers, our ballistic fibers are non-flammable, so there is no risk of fire. Unlike a water chamber, the bullet is captured undamaged so that examinations and comparisons can be made. The Bullet Catcher is segmented into three compartments to simplify searching. The Bullet Catcher can be used to recover bullets from all pistols and rifles with a maximum bullet velocity of 1100m per second (3,609 fps). The fibers can be used to capture approximately 10,000 shots. Replacement ballistic fibers are available.

Specifications

Dimensions: 53" x 20" x 12" (135 x 51 x 30 cm)
Weight: Approximately 110 lbs (50 kg)

- 4-2000** Bullet Catcher
- 4-2001** Ballistic Fibers — Replacement



Handgun Bullet Catcher

This bullet catcher is a scaled-down version of our popular Bullet Catcher designed specifically for recovering handgun bullets for comparative analysis. Just 26" (66 cm) long and 64 lbs (29 kg), this durable device is fabricated from ballistic steel and packed with eight pounds of non-flammable ballistic fibers to safely trap and recover rounds with velocities up to 1,535 fps, including the .44 Magnum. It is highly portable and stores out of the way when not needed to optimize working space.

Specifications

Dimensions: 26" x 20" x 10" (66 x 51 x 25 cm)
Weight: Approximately 64 lbs (29 kg)

- 4-2002** Handgun Bullet Catcher
- 4-2003** Ballistic Fibers — Replacement

NEW PRODUCT

3M™ Versaflo™ PAPR System

This is the easiest way to select a complete system for clean room and other applications where an S-133, APF 25 Headcover is appropriate. The Versaflo PAPR Kit includes an S-133 Headcover, a TR-307N PAPR with Easy Clean Belt, a BT-30 Breathing Tube, charger, TR-3710N filter and a storage bag. Available in two sizes: small/medium and medium/large. The Versaflo PAPR Kit is also available with the backpack accessory.

- PAPR
- Headcover
- Battery Charger
- Airflow Meter
- Breathing Tube
- Storage Bag

- 3-5470** Versaflo Kit, Small/Medium
3-5471 Versaflo Kit, Medium/Large

S-Series Integrated Suction Headcovers

Offer the advantage of clean, reusable headgear that is ready to use straight out of the box. They can be suitable for applications that require frequent replacement of the entire headgear assembly, such as pharmaceutical manufacturing, or in situations where there is less soiling of the outer surface.

- 3-5472** Replacement Headcover, Small/Medium
3-5473 Replacement Headcover, Medium/Large

The 3M™ Peltor™ ORA TAC In-Ear Communications Headset

NEW PRODUCT

The 3M™ Peltor™ ORA TAC In-Ear Communications Headset features noise cancelling, in-ear microphone technology that delivers clear communications when transmitting over a 2-way radio. Designed for extended wear in demanding conditions, this lightweight system eliminates the need for a boom microphone, making it adaptable to many industrial applications including mining and power respirators use used.

- 3-5491** ORA TAC In-Ear Communications Headset

ARC Earplugs with Carry Case

The patented Hear-Through™ design allows workers to hear conversation, signals, and other critical sounds clearly, while protecting against damage from impulse noise from an arc flash. Insert the yellow end and it allows clear hearing, and insert the red end for 22dB protection from high-noise levels (heavy equipment). The filter is instantly suppressed by a calibrated filter, reducing it to a safer level, which reacts instantaneously to reduce or eliminate the risk of hearing damage or concussive disorientation. Washable and reusable plugs include a plastic carrying case with dielectric chain.

- 3-5490** ARC Earplug with Carry Case

NEW PRODUCT

5X Lighted Magnifier with Henry Disk

Dactyloscopic magnifier is designed for classification and investigation of fingerprints and examination of small objects. It has excellent central and side sharpness, brightness and contrast with correct color range, magnification and convenience in use. Field of view is sharp with no distortion. It is a supplied built-in light source with 3-dim selection. Requires two AAA batteries.

- 5-1055** 5x Lighted Magnifier with Henry Disk
- 5-1055A** Henry Disc
- 5-1055C** Henry/Battley Disc
- 5-1055D** Miracode Palm Disc



Shown with optional disks



Stretch-View Series Rectangular Magnifier

Dazor®'s Stretch-View lighted magnifiers are used in diverse professional work environments globally. The rectangular shaped magnifying lens "stretches" the traditional 5-inch circular viewing area to 6.75 inches. This wider viewing area under the lens allows for comfortable vision with both eyes and also reduces eyestrain and fatigue. Visual scanning speed is increased because more surface area is magnified. It has a crystal clear and distortion free optical grade lens with three magnification level options. The patented internal spring "floating arm" easily allows for positioning without drifting or bouncing, and comes with a five-year warranty.

MR100-BK Stretch-View Series Rectangular Magnifier

Circline Series Magnifier

Dazor®'s Circline lighted magnifiers are used in diverse professional work environments globally. The natural bright white light uniformly illuminates surfaces so viewing accuracy is enhanced without any competing shadows. It has a crystal clear and distortion free optical grade lens with four magnification level options. A patented internal spring "floating arm" easily allows for exact positioning without drifting or bouncing. The magnifier is made of an all metal construction for rugged, heavy use environments and has a five year warranty.

SPECK-8MC-100 Circline Series Magnifier



Labino® Nova Torch

A cordless, battery operated torch light based on LED technology, the new Labino® Nova Torch Light consists of eight high intensity, alternate forensic light sources for crime scene investigation, as well as a UV light source. The light emitting diodes emit a beam of light that is evenly distributed. The torch can be operated with one Li-ion battery and provides 180 minutes running time when fully charged. Its compact size makes it easy to work with and, with an instant start function, you get full power immediately.

Nova Torch Lights are available individually or as cased sets which include four goggles (UV-block, red, orange and yellow), two battery chargers, two battery packs, and a carrying case. Other accessories are available.

- 9-0250 Nova Torch, Full Kit
- 9-0251 Nova Torch, Base Kit
- 9-0261 Nova Torch, UV Head, 415nm
- 9-0252 Nova Torch Light, Violet, 415nm
- 9-0253 Nova Torch Light, Blue, 455nm
- 9-0254 Nova Torch Light, Green, 530nm
- 9-0255 Nova Torch Light, Red, 627nm
- 9-0256 Nova Torch Light, Amber, 590nm
- 9-0257 Nova Torch Light, Cyan, 505nm
- 9-0258 Nova Torch Light, White, 4100° K
- 9-0259 Nova Torch Light, UV, 365nm



Labino® Astra Torch LED

The Labino® Astra Torch is a cordless battery-operated torch light based on LED technology. The Astra Torch offers six different colored heads and one UV head. The light emitting diodes emit a beam of light that is evenly distributed and very powerful. The torch can be operated with three normal alkaline batteries. Its compact size makes it easy to work with and with an instant start function you get full power immediately.

The base kit includes one Li-ion battery, one charger, four goggles (UV-block, red, orange and yellow), and one carrying case with a carrying case for the torch.

- 9-0210 Astra Torch, Full Kit
- 9-0211 Astra Torch, Base Kit
- 9-0212 Astra Torch Head, Blue, 455nm
- 9-0213 Astra Torch Head, Cyan, 505nm
- 9-0214 Astra Torch Head, Green, 530nm
- 9-0215 Astra Torch Head, Amber, 590nm
- 9-0216 Astra Torch Head, Red, 627nm
- 9-0217 Astra Torch Head, White, 4100° K
- 9-0218 Astra Torch Head, UV, 365nm

Labino® Torch Light UVG2 Spotlight

The Labino® Torch Light UVG2 Spotlight is a small, lightweight, UV-A LED flashlight designed for quick inspections and for looking into tight spots. The Labino Torch Light UVG2 produces a narrow, intense ultraviolet beam measuring over 18 000 µw/cm2 at a distance of 38 cm (15 inches). The center of the light beam is 30 mm (1.2 inches) in diameter. The light beam is 70 mm (2.8 inches) at a distance of 38 cm. The Labino Torch Light UVG2 contains one UV LED emitting diode. It is suitable for use in forensic, industrial, leakage and other applications. Full power is reached instantly. A fully charged battery provides 180 minutes of use. Recharge from a normal outlet or vehicle.

The kit includes the UV LED flashlight, two chargers, two battery packs, a holster and UV-block glasses. Carrying case is optional.

- 9-0270 Torch Light UVG2 Spotlight



WAYS TO ORDER

Call Toll Free:

(800) 347-1200

Outside the U.S.:

(904) 485-1836

Office Hours:

8 a.m. to 5 p.m. EST (GMT-5)

Fax Toll-Free:

(800) 366-1669

Outside the U.S.:

(904) 741-5407

Internet:

Order directly through our

Web site. It's fast and easy:

www.ForensicsSource.com

Mail:

Send your completed order form

or purchase order to:

13386 International Parkway

Jacksonville, FL 32218

United States

ORDERING INFORMATION

Delivery Times

For an estimate on delivery times, please contact one of our customer service representatives. Shipments outside the United States or to Alaska or Hawaii will incur additional shipping charges. Expedited shipping is available, but may require hazardous material charges. Items that require hazardous shipping charges are identified with specific icons (see the Key to Symbols below). If you require expedited shipping, please contact a Forensics Source representative for shipping and delivery estimates. Shipments are insured and made in accordance with prevailing shipping regulations. Please contact us if you have any questions regarding shipping.

Back Orders

Although we keep a large supply of products in stock, occasionally items are placed on back order. If this should happen, we will ship the in-stock portion of your order immediately and then ship back-ordered items as they become available. Please notify a Forensics Source representative if you would only like your order to ship once it is complete.

Special Orders

We try to carry any item you may need. However, in this unique market we understand that often, we may not stock the exact item you are searching for. If you need a specialized piece of equipment or would like a customized kit, please contact your local Forensics Source representative. We will do everything possible to obtain the items you are looking for. Special order items are sold on a non-returnable basis.

KEY TO SYMBOLS

Listed are the symbols used throughout this catalog.



**CUSTOMIZE
THIS PRODUCT**

Customizable to fit your specific needs. Many products can be printed with your agencies logo or information.



**TECH NOTES
ONLINE**

More information can be found about these products at ForensicsSource.com.



**ADDITIONAL
SHIPPING**

Some products we carry may require additional shipping surcharges or may not ship by air.



**ADDITIONAL
OVERSIZED
SHIPPING**

Oversized items may require an additional shipping surcharge. Please contact our Customer Service Department for details or a shipping quotation.



**ADDITIONAL
SHIPPING
NO AIR**

Pricing and Misprints

Product pricing and specifications are subject to change without notice. Forensics Source reserves the right to correct misprints, typographical, photographic and pricing errors. We apologize for any inconvenience. All prices are listed in U.S. Dollars. For the most up-to-date pricing, please visit our website at www.ForensicsSource.com.

INTERNATIONAL ORDERS

We are proud to offer the highest-quality forensics supplies to law enforcement agencies worldwide.

Orders Outside the United States

We are happy to provide high-quality forensics supplies to nearly every country around the globe. Let us know the description and quantities of the equipment and supplies you need and we will either forward your request to a Forensics Source representative in your region for direct quotation, or in the event there is no representative near you, will gladly send you a proforma invoice or quotation for FOB, CIP or CIF value. Please note that some products cannot be shipped by air or may require additional shipping surcharges. Please contact our Customer Service Department or your local Forensics Source representative for additional information.

Export of Forensic Equipment

Some products we sell are controlled by the U.S. Department of Commerce and cannot legally leave the United States without an export license. Failure to obtain a proper export license can result in heavy fines and possible imprisonment. If you are considering exporting or taking forensics supplies outside the United States for any purpose, please contact our Customer Service Department to determine if a valid export license is required. If a license is required, we will be happy to assist you in the license application process.

Forensics Source obtains all necessary licenses for orders which ship directly from our facilities to international destinations. Please note, however, that such shipments are intended for resale only within the country to which they are originally sent. Re-exporting, or reselling into additional countries may require further export licenses. Contact our Customer Service Department with any questions.

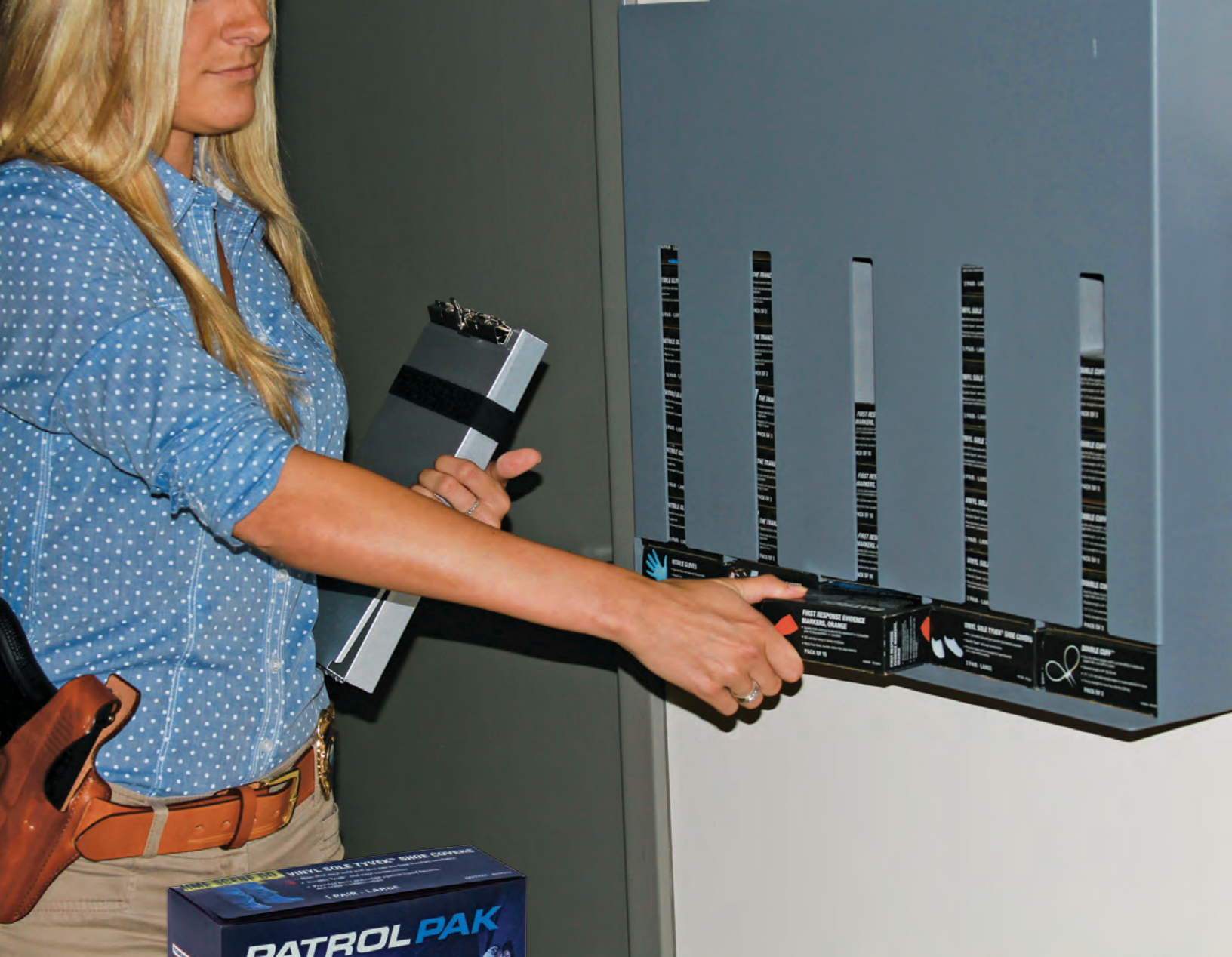
EXCHANGE AND RETURN POLICY

Our goal is to make you a satisfied customer. If you would like to return an item, for any reason, simply contact our customer service department within 90 days of your original order. To expedite the return or exchange process, please be prepared to provide us with your original order number, which is printed on both your packing slip and invoice. A 10% restocking charge may apply to products which are not in resellable condition. Please note that books, video tapes and DVDs are non-returnable. If your shipment is damaged or missing items, please retain all paperwork and shipping materials and contact our customer service department within 10 business days.

When returning goods, please write your return authorization number on the outside of the box and ship to: Forensics Source, ATTN: Receiving, 13386 International Parkway, Jacksonville, FL 32218

Quality Assurance Goal

Your job is important and we understand you need excellent products and support. We strive to provide you with a superior customer experience, with both the highest quality goods and best customer support possible. If you are unsatisfied in any way with a newly purchased item, or with the level of service you receive from us, please contact us.



The Products You Need Most at Your Fingertips

Patrol Products Dispenser Box

This new Patrol Pak Dispenser Box was designed with forensic professionals and law enforcement officers in mind. It has never been easier to access a wide variety of your most used drug test kits and other critical forensic supplies when and where you need them. Officers and technicians who need drug test kits or other frequently-used supplies can quickly grab a box and head out on the job.

The box fits all NIK® Public Safety and ODV™ presumptive drug test kits. It also fits a specially selected assortment of high-use patrol and forensic products including nitrile gloves, evidence markers, disposable restraints and evidence storage bags. All products are dispensed in handy cardboard boxes designed to fit a glove box or gear bag for easy access in the field. Sleek gray powder coat finish fits perfectly in any professional or institutional setting. See pages 2 and 3 for details and pricing.

FORENSICS SOURCE™

13386 International Parkway
Jacksonville, Florida 32218

Priority Number:

0713CEN

www.ForensicsSource.com • 1.800.347.1200

Narcotics, Explosives & GSR Detection

Selected by POLICE® as one of the year's
12 Really Cool New Police Products

Unattended package?

Suspicious vehicle or person?

Use the **XCAT** trace explosives detection
capability to sample people, surfaces and packages.

Is Bath Salts a threat in your community?

Use the **XCAT** to reliably detect trace amounts of common
Bath Salts such as **Mephedrone, Cathinone, and TFMPP.**



**NOW...
INEXPENSIVE, IMMEDIATE
CRIME SCENE
GSR DETECTION!**

Red light/Green light presumptive testing for **GSR**
on the street in minutes for a fraction of lab costs.

Amphetamines
Picric Acid
ANFO
PCP
Cocaine
Bath Salts
TNT
C4
RDX
PETN
Crystal Meth
Gunshot Residue
Methamphetamine
Heroin



**Detection in the palm
of your hand**
(1 step, 1 platform, 1 lb)

Red Defense
redxdefense.com